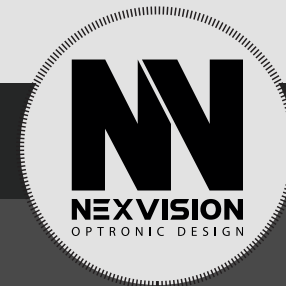


CLBS : COLOR LASER BEAM SEARCHLIGHT



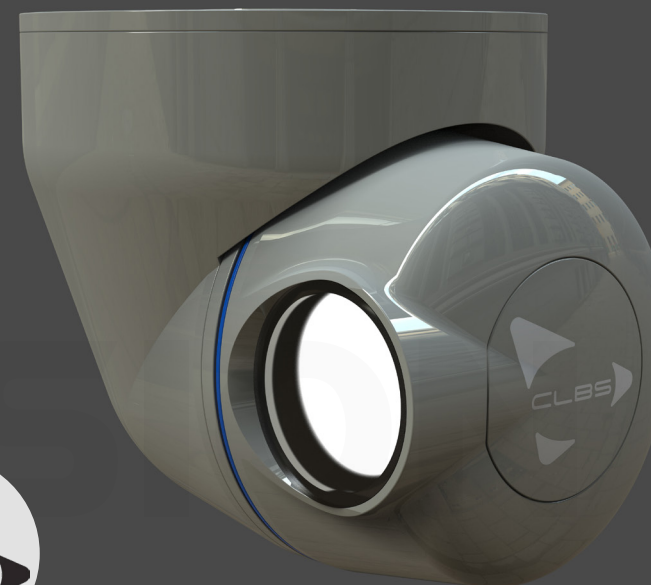
TAKE OFF, LANDING, SEARCH & RESCUE AT NIGHT

KEY FEATURES

- Laser lighting
- Spectral band : R + G + B + optional near infrared (VNIR and/or SWIR)
- Power output up to 30 000 lumen dimmable
- Working distance range : range 0.1 (328ft) to 3km (~10kft) thanks to LASER's sustained beam coherency.
- Useful range for human target identification : typical 1km (~3.5kft)
- Variable beam divergence : 4° to 15°
- Night vision goggles compatible

BENEFITS

- Splitted light source and emitter head over fiber optic :
 - Laser light source can be ideally located close to electrical power source and cooling without being exposed to outdoors constraints
 - Projector head is compact, drastically reducing aerodynamic drag and associated consequences
- High power RGB laser light source :
 - Compact, high efficiency
 - High speed and wide range power modulation of individual colors
 - Suspect's dizziness by strobing effect



SPECIFICATIONS

Searchlight head «SU» : gimbals subpart (outside aircraft)

- Envelope Size : Height 209mm (7.87") x Diameter: 195mm (7.68")
- Weight : 4.9kg (10.8lbs)
- Small ball design for a very low aerodynamic drag

Light beam generator & power supply subpart «PU» (inside aircraft)

- Main laser light generator
- Power supply to the searchlight head
- Size : Height 120mm (4.7") x Length: 300mm (11.8") x Width: 200mm (7.9")
- Weight : 3.9kg (8.6lbs)
- Heat dissipation : Active cooling with fan

User hand grip Remote Controller Unit «RCU» SUBPART (inside aircraft)

- Size : Height 30mm (1.2") x Length: 150mm (5.9") x Width: 120mm (4.7")
- Weight : 0.7kg (1.5lbs)
- Night Vision Goggles (NVG) compatibility (MIL-STD-3009)

Control panel (joystick, buttons, display)

- A second user controller: panel version with extended features and more informative display
- Master/slave priority switch
- NVG compliant

Other

Speed rotation	180°/s
Rotation	Azimuth : n x 360° Elevation : +10°/-180°
Power consumption	1300W



INSTALLATION KIT

Mounted set : standard

- On fuselage head mounting enclosure
- Default mounting option : easy to mount, certified and maintain.
- Height 230mm (9") x Length: 210mm (8.27") x Width: 210mm (8.27").

Takeoff-landing approach lighting

- Take-off and landing light
- 10 000 lumen LEDs
- 60° fixed beam angle
- Available only on fuselage mounting set

Cables set : standard

- 1x PU <-> SU, 5m long (power supply «PU > SU» & high speed serial control link)
- 1 x PU <-> RCU, 10m long (power supply «PU > RCU» & control-command serial link)

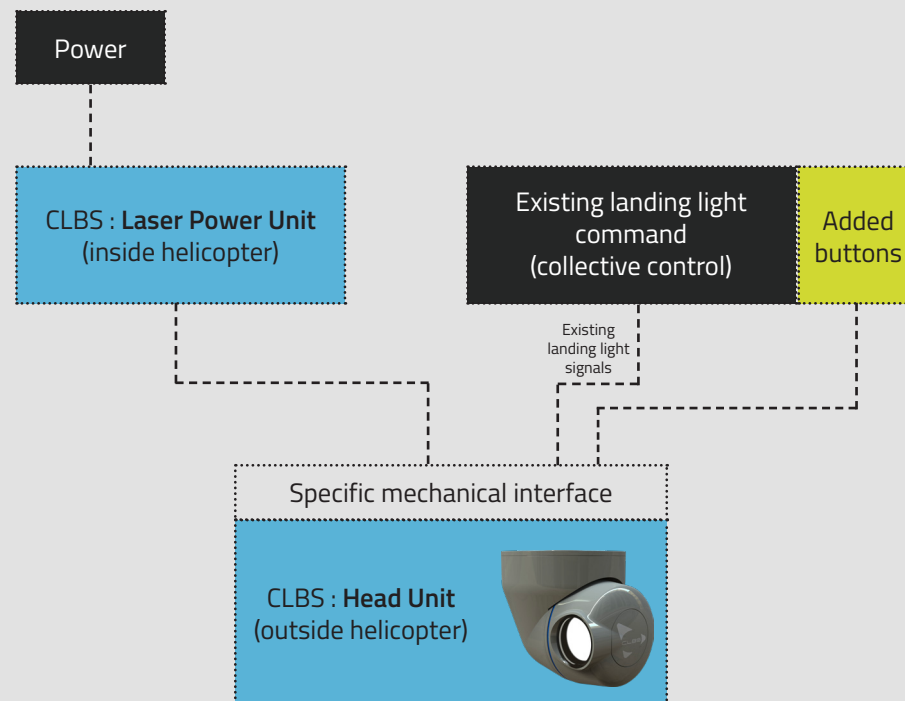
Mounting custom set : brackets option

- Side mounted on A/C

OPTIONS

- Slaving to electro-optics gyrostabilized gimbals (GSG9/11)
- Laser Near Infrared pointer (compatible with NVG devices)
- Laser Range Finder (eye safe SWIR, 1km range)
- LIDAR (high resolution 3D perception, «sense & avoid collision»)
- Thermal IR camera wide angle and narrow angle (LWIR)
- Color 4K camera, low light (quarter moon), continuous optical and digital zoom.

SYNOPTIC



Legend

